

LEGEND

HARDSCAPE ○

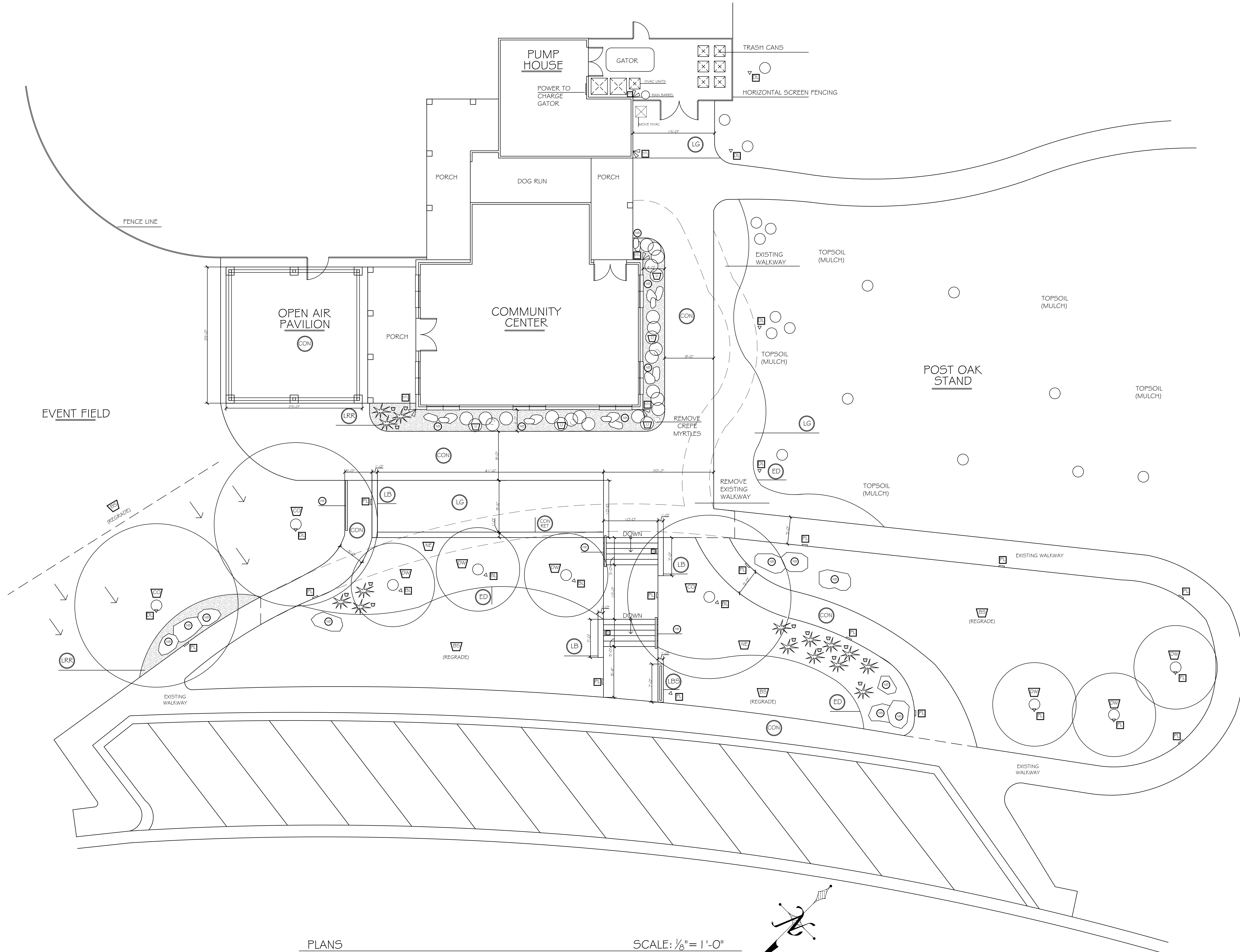
- LB- LIMESTONE BLOCKS
- LBS- LIMESTONE BLOCK W/ SIGN
- NB- NATURAL LIMESTONE BOULDERS
- CON- CONCRETE PATH / 6" DEEP WITH REBAR
- CON RET- CONCRETE RETAINING WALL / 24" PIERS WITH REBAR / WALLS FRAMED WITH MITERED 'CHAMFER' TOP EDGES
- LG- LIMESTONE GRAVEL / SIZE: 1/2"-1" / DEPTH: 3" DEEP WITH CLOTH WEED BARRIER, PACKED
- ED- 1/2" STEEL EDGING / UNPAINTED, RAW (NO COLOR)
- LRR- LIMESTONE & RIVER ROCK BED
- HR- STAIR HAND RAIL

LIGHTING □

- PL- PATH LIGHT (SHIELDED WELL LIGHT)
- SL- STAIR LIGHT
- STL- SAFETY LIGHT
- BL- BULLET UPLIGHT LIGHT, 60°
- FL- FLOOD UPLIGHT(WELL) LIGHT
- DL- DOWNLIGHT FLOOD (TREE) LIGHT
- CL- CAN LIGHT
- Ⓟ- OUTLET
- OF- OUTDOOR FAN

PLANT MATERIAL ▽

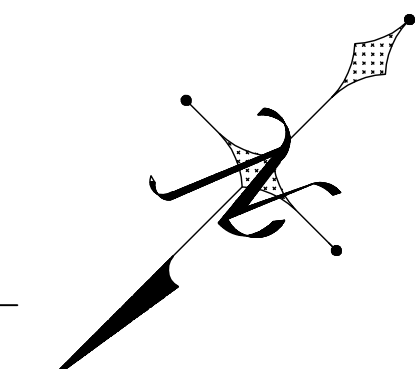
- CO- CHINQUAPIN OAK, 60-GALLON CONTAINER-GROWN OR SIMILAR B#B
- DW- DESERT WILLOW
- YU- YUCCA, 'BRAKE LIGHTS'
- NE- NEPETA, MASS PLANTING
- LI- LIRIOPE 'MUSCARI BIG BLUE'
- BS- SOD 'BERMUDA SOD'



AREAS	SQFT
DEMO EXIST. CONCRETE	915
NEW ADDED CONCRETE	3315

PLANS

SCALE: 1/8" = 1'-0"



JULIE CRAVENS
LANDSCAPE DESIGN
214-499-4516

W&D DRAFTING
Planning, Consulting, & Design
405 Haupt
Kyle, Texas 75640

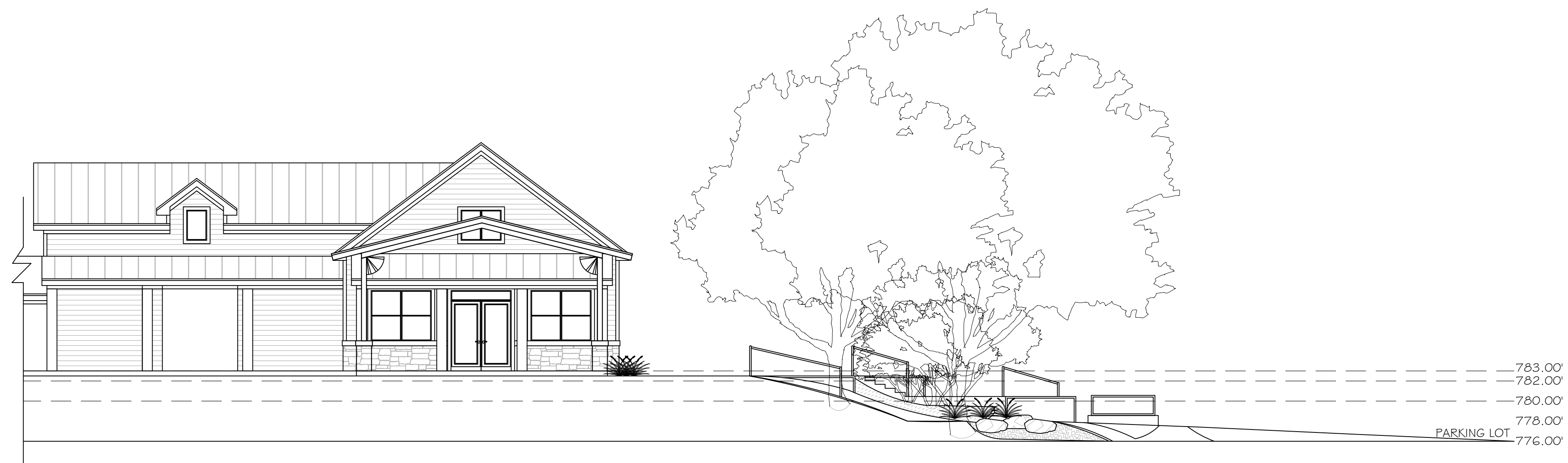
Plum Creek Community Center
405 Haupt
Kyle, Texas 75640

PLUM CREEK CC
1/23/2025
ONE



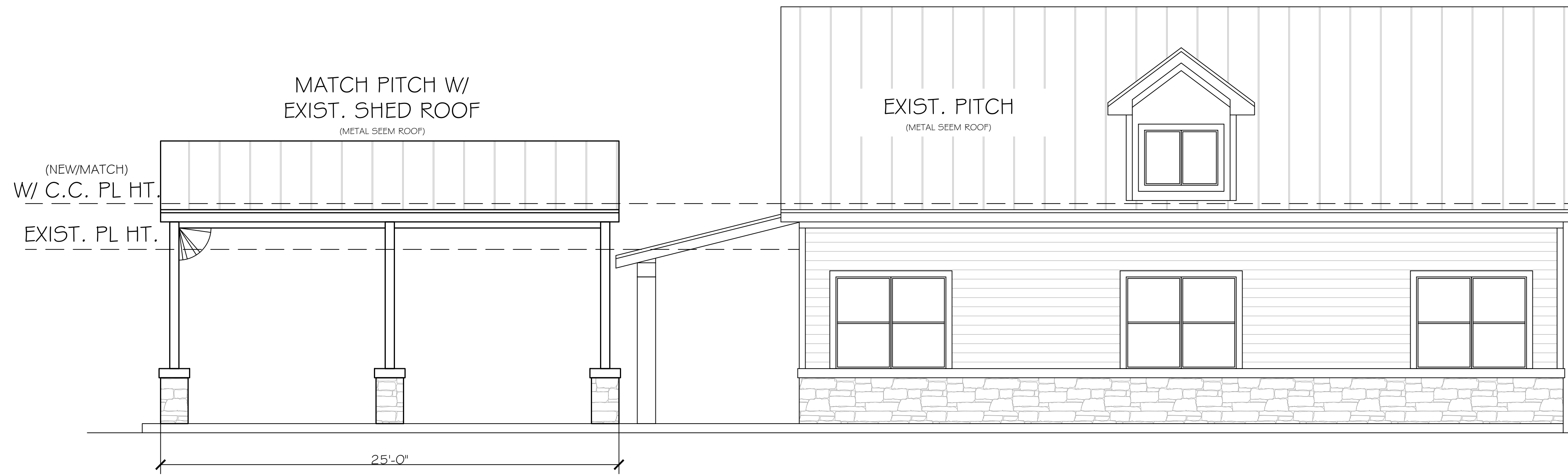
FRONT ELEVATION

SCALE: 1/8" = 1'-0"



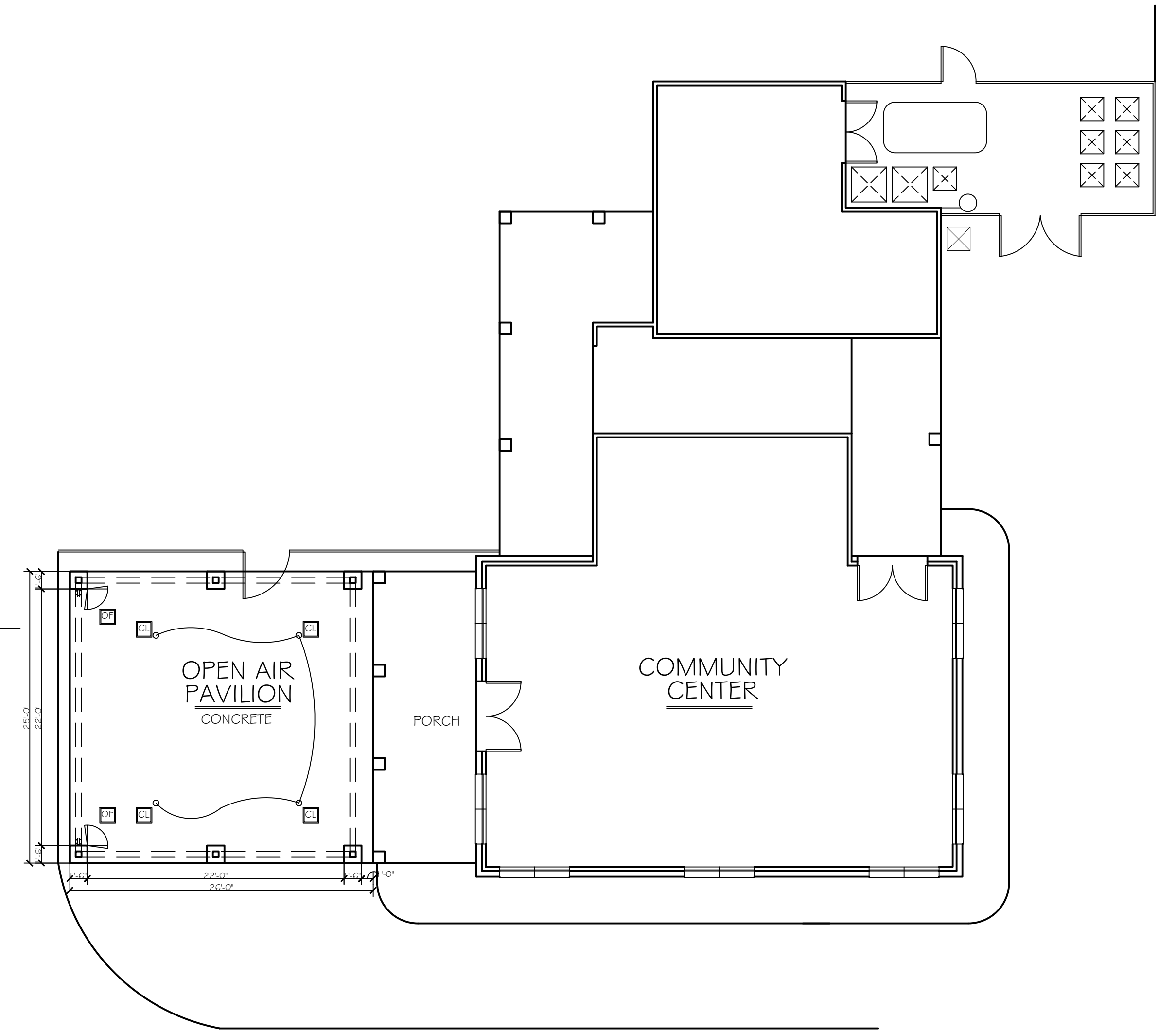
LEFT ELEVATION

SCALE: 1/8" = 1'-0"



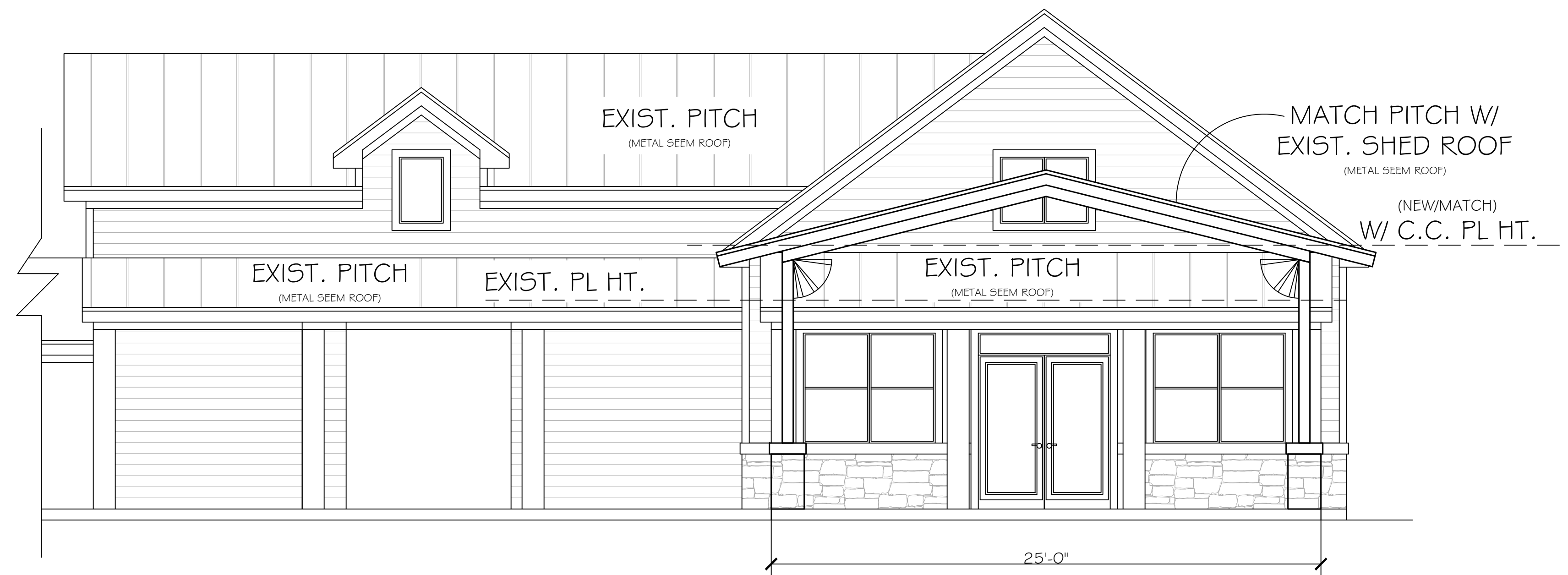
FRONT ELEVATION
 CONCEPTUAL DRAWINGS/ PLATE HEIGHTS & ROOF PITCHES TO BE VERIFIED AND SEPC'D BY BUILDER

SCALE: 1/4" = 1'-0"



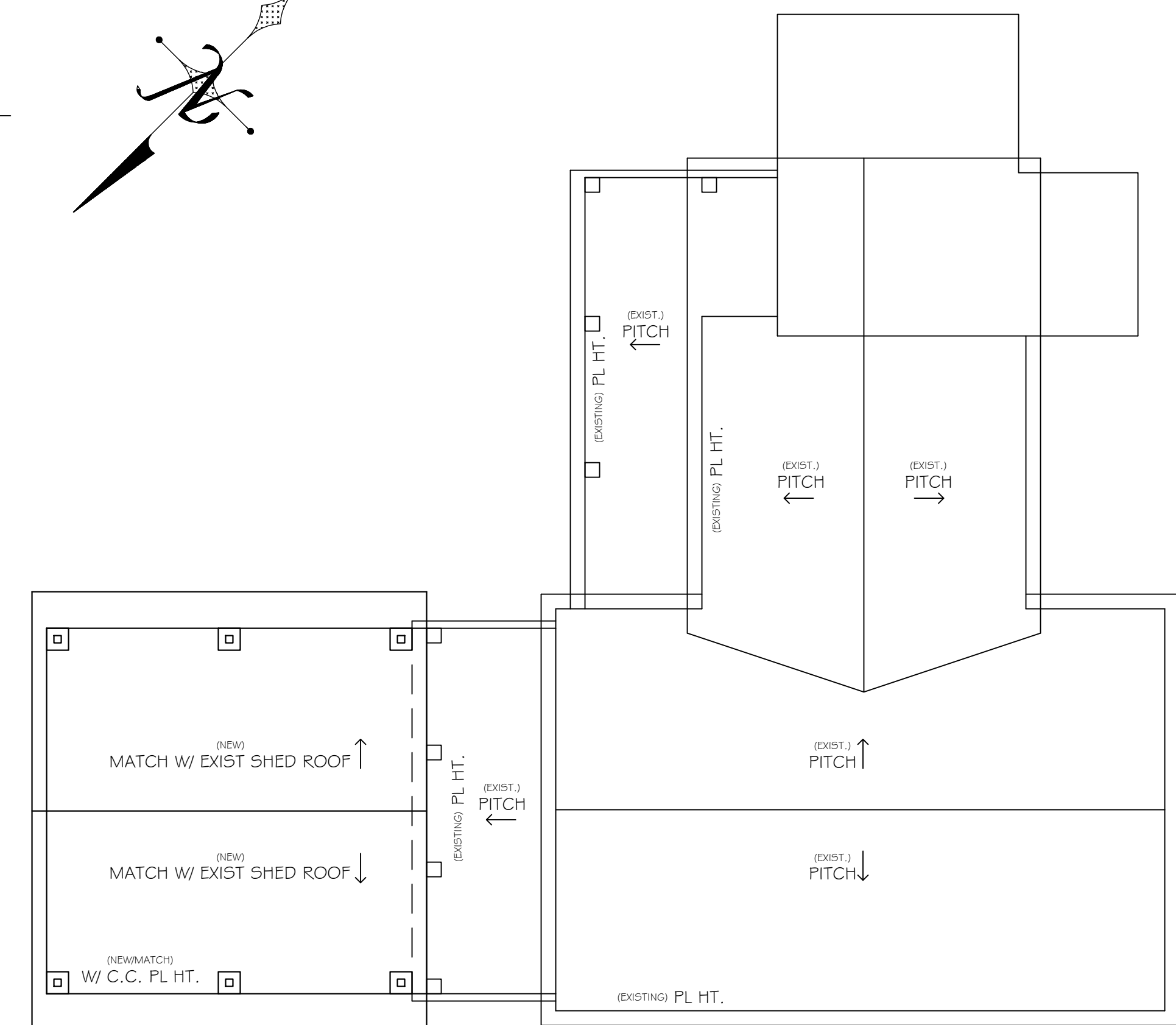
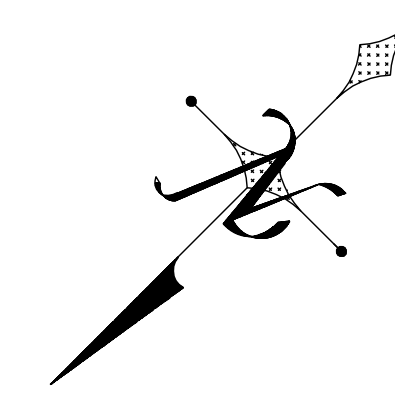
FLOORPLAN

SCALE: 1/8" = 1'-0"



LEFT ELEVATION
 CONCEPTUAL DRAWINGS/ PLATE HEIGHTS & ROOF PITCHES TO BE VERIFIED AND SEPC'D BY BUILDER

SCALE: 1/4" = 1'-0"


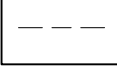


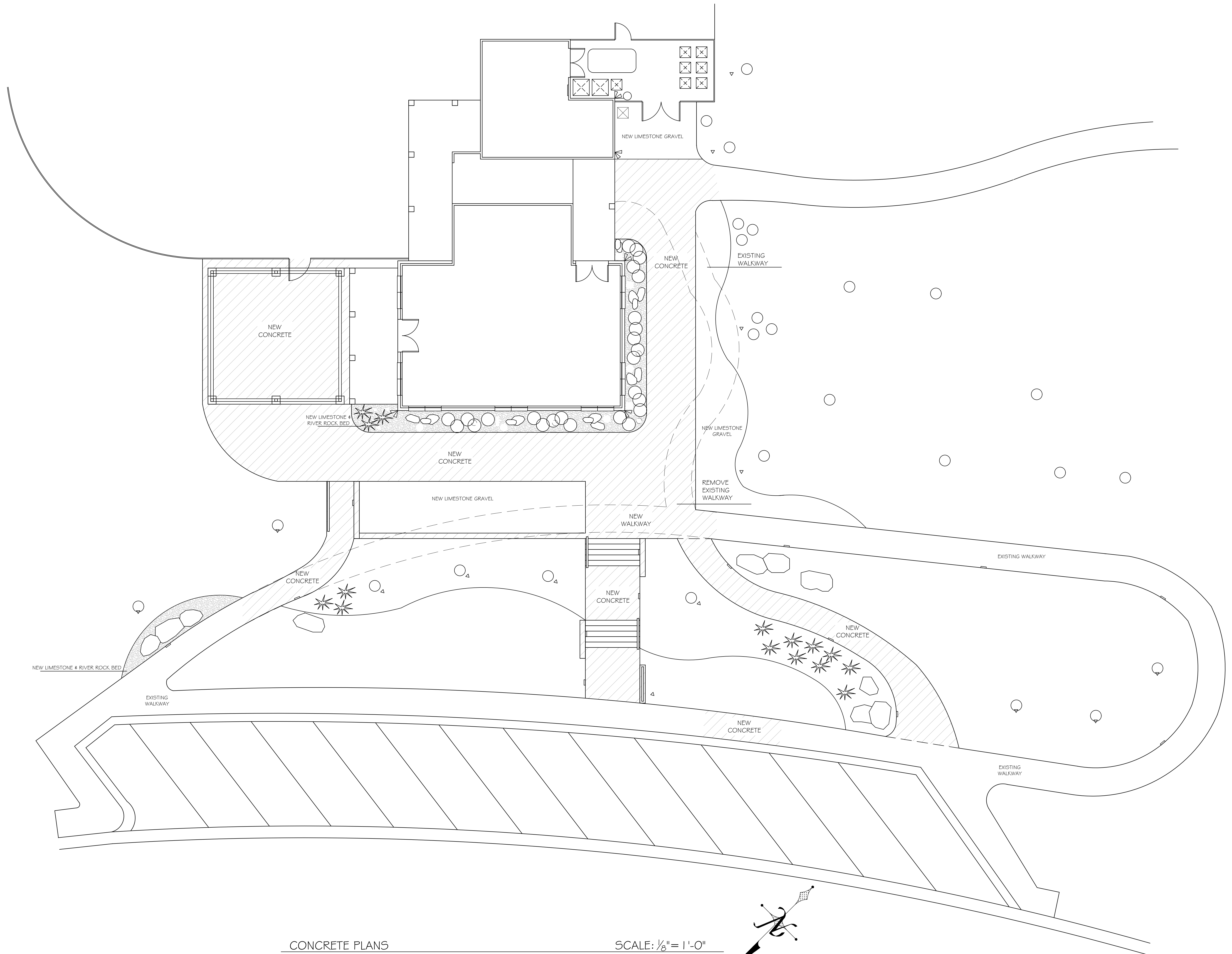
ROOF PLAN

SCALE: 1/8" = 1'-0"

CONCEPTUAL DRAWINGS/ PLATE HEIGHTS & ROOF PITCHES TO BE VERIFIED AND SEPC'D BY BUILDER

LEGEND

-  NEW CONCRETE
-  DEMO EXISTING CONCRETE



AREAS	SQFT
DEMO EXIST. CONCRETE	915
NEW ADDED CONCRETE	3315

CONCRETE PLANS

SCALE: 1/8" = 1'-0"



JULIE CRAVENS
 LANDSCAPE DESIGN
 214.499.4516

Plum Creek Community Center
 405 Haupt
 Kyle, Texas 75640

PLUM CREEK CC
 12/31/2025
 FOUR